

# Product Catalog

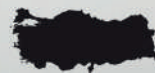
INTERNATIONAL EDITION

[www.macrosimplant.com](http://www.macrosimplant.com)

 **MACROS**  
Dental Implant Systems



Macros Dental Implant Systems - Ostim OSB. Mah. 1271. Cad.  
No: 19 Yenimahalle / Ankara Phone: +90 (312) 418 93 72  
[www.macrosimplant.com](http://www.macrosimplant.com)



Products made  
in Turkey

# CONTENTS

## About Us

Our Story	5
Production Standards	7

## Macross Technical Information

Implant Dimensions	25
Prosthetic Parts	32

## Macross Surgical Kit

Surgical Kit	62
Standart Surgical Kit	
Small Surgical Kit	
Surgical Kit Layout	63

## Certifications

Our Certifications	65
--------------------	----

Macross implant has ISO 13485: 2016 quality approval in international quality management system standards. Within the scope of this approval, it is in the norms that can be sold all over the world with the explanation of the medical product that can be implanted to the body in the risk class IIb products regulation and CE certificate numbered 93/42/AT, M.2020.106.13745 in accordance with the international CE regulation.







**“ Life is Beautiful  
When You Laugh ”**



**MACROS**

Dental Implant Systems



## ABOUT COMPANY

Committed to a quality approach in the dental sector since 2006, we have been serving our distinguished dentists with various titles and patients from almost all parts of Turkey, which has been levelled up by 6 years of producing experience, and Macros Implant Project was brought into action with high standards within unique quality.

### **WHY MACROS IMPLANT SYSTEMS?**

As Macros family, we have been working hard to provide our customers with the best products as we deeply believe that every patient has the right to get the highest quality under our innovative R&D studies in accordance with the European standards.

Macros is known to have quality, sensitive and creative products in disposable medical device sector.

We are doing our best to meet our customers' needs and expectations, to raise the standards of our patients and dentists with all our energy, ambition, determination, and experience ensuring absolute customer satisfaction.

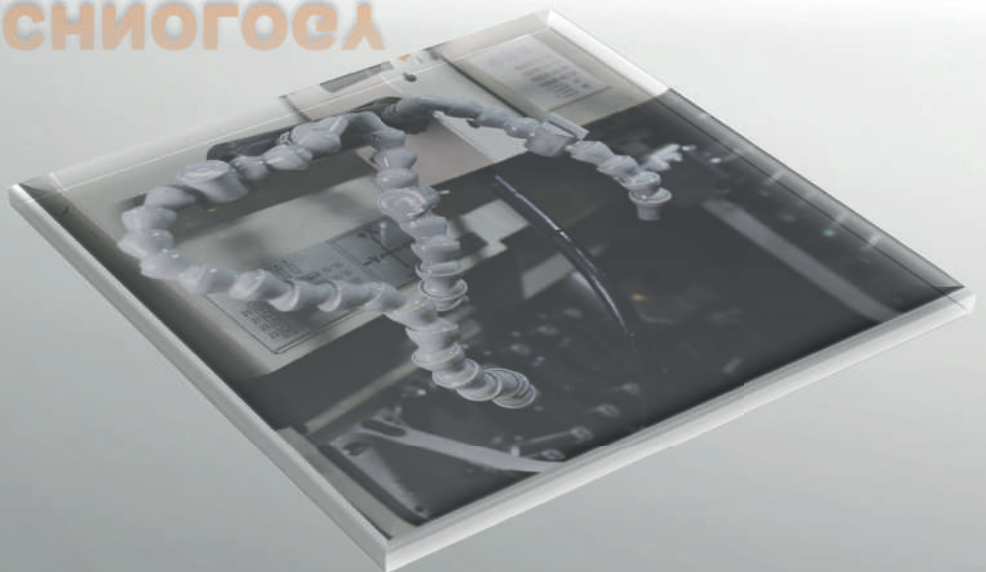




All of our implants and equipments are manufactured using superior engineering in whole accordance with human health.

Your health condition is our top priority !

**HIGH EFFICIENCY  
AND  
NEW GENERATION  
TECHNOLOGY  
ТЕХНОЛОГІЯ**



## PRODUCTION AREA

All Macros products are manufactured by CNC machines that have the micron sensitivity.



## QUALITY POLICY

At Macros Implant, our quality policy summarises the essential elements of our commitment for excellence and includes;

- keeping high quality and safety standards in all our products,
- leading our patients to a better health condition via hi-tech applications with essential hygienic measures,
- making each product with the same quality thanks to our multi-staged quality control system,
- constantly updating ourselves in pursuit of the latest technology with our modern and innovative R&D studies far from the conventional methods,
- ensuring quality fully embedded in our purpose and values by our Quality Control Department with great effort and devotion.

Macros Implant products are scrutinized under great precision using hi-tech machinery and the ones that have little defects are separated by the professional authorities.







**MACROS SO STRONG**

Dental Implant Systems

 **DIGITAL MEASURING SYSTEMS**

3D information of Macros Dental Implant Systems is available in Exocad and Dental Wings libraries and it is constantly updated.

We cooperate with our software partners for our dentists to reach the most current solutions.



 **CLEANING PROCESS**

**Innovative Solvent Cleaning System** is used for all Macros Implant products.

**SAND BLASTING AND SURFACE PROCESS**

Our available automation carries out blasting process with the same quality standards.

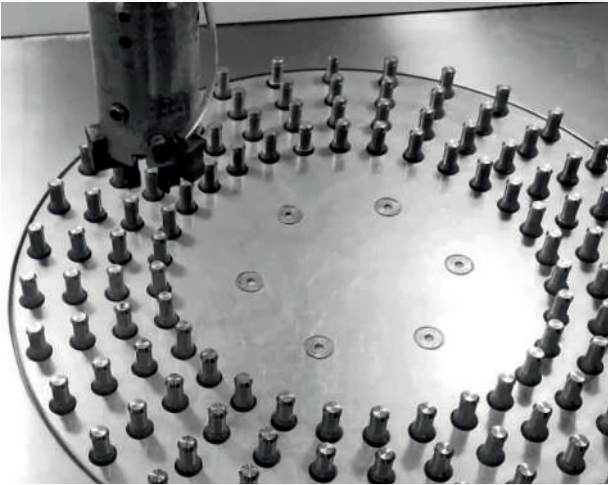








## SAND BLASTING AND SURFACE PROCESS

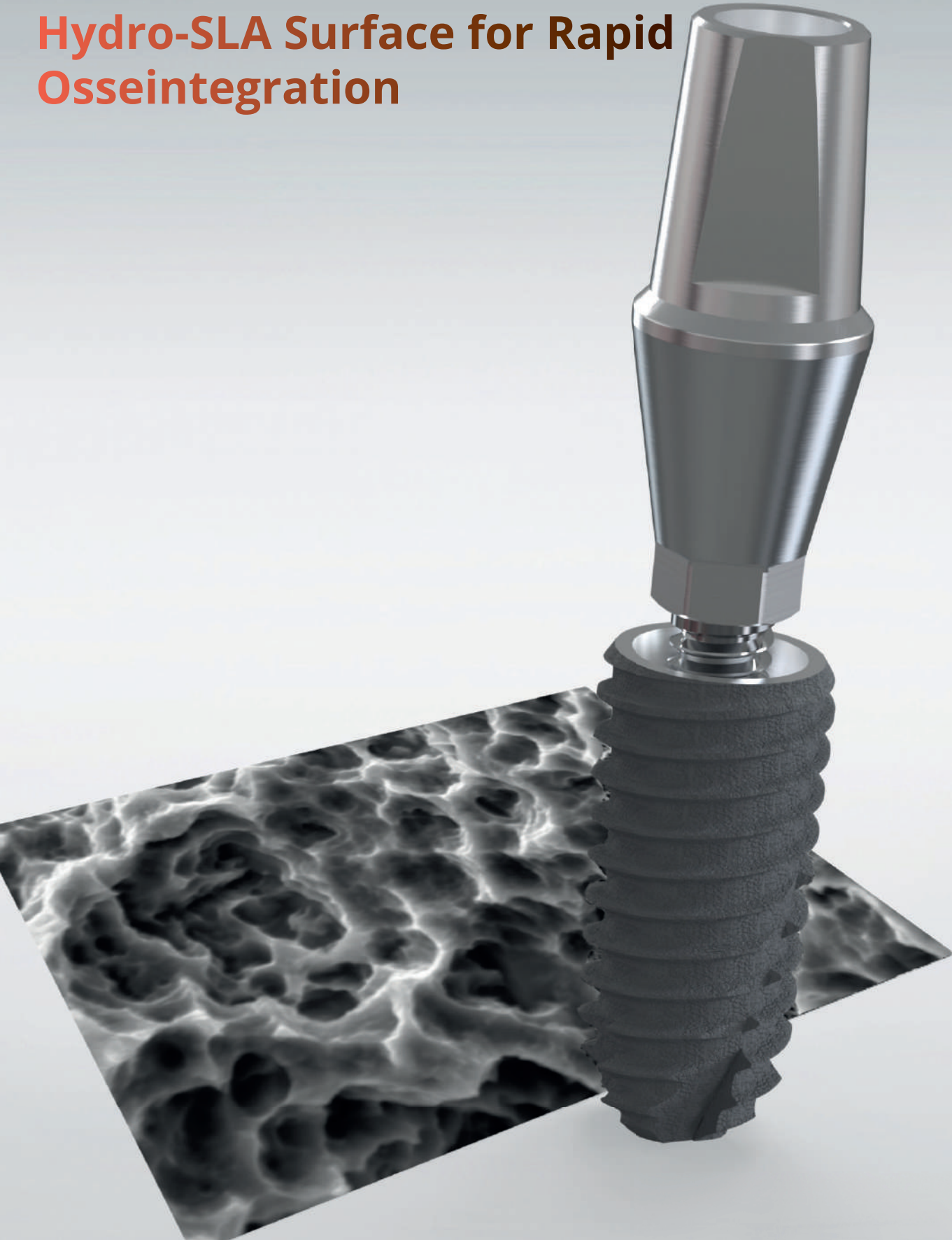


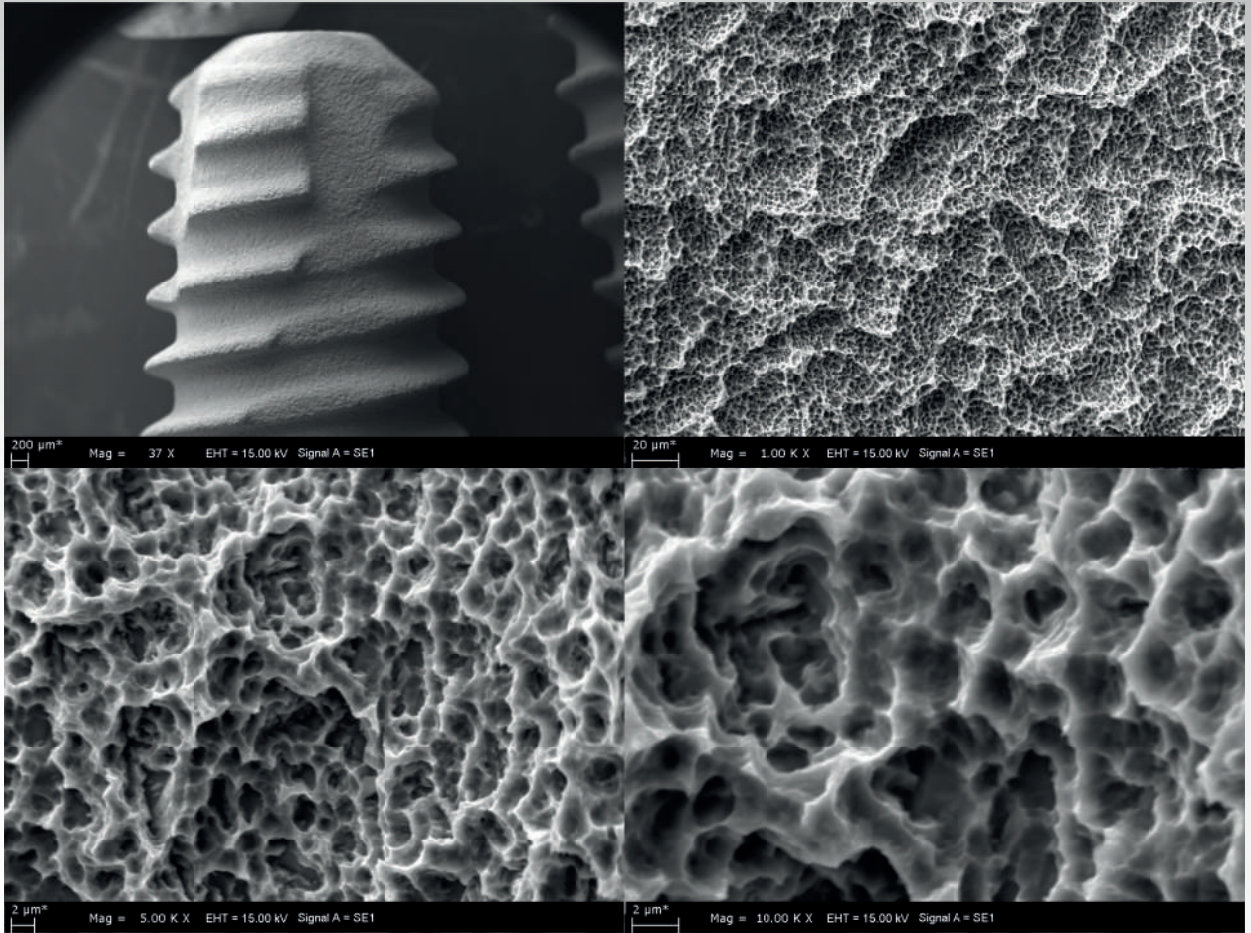
Our available automation carries out blasting process with the same quality standards.

Alumina sand is used to create holes between 2.5 – 3.5  $\mu\text{m}$  calibres. This process enables macro roughness for acidification.

Thanks to the acidification process with a special formula, macro and micro holes are formed and Bone Implant Contact (BIC) value is gained.

# Hydro-SLA Surface for Rapid Osseointegration





## HYDRO - SLA SURFACE

When hydro-SLA surface is made, after the process of blasting and roughening, it is decontaminated by chemical erosion and cleaning and with the coldest Argon plasma, surface turns into an active hydrophilic one. Thanks to this surface hydrophilic feature, when it is placed into tissue, it draws blood to micropores on it and at the beginning phase of osseointegration, blood clot enables stabilisation. Macros Hydro-SLA surface speeds ion immobilisation and apatite layer, the formation of this layer is a key factor in order to induce new dentin.

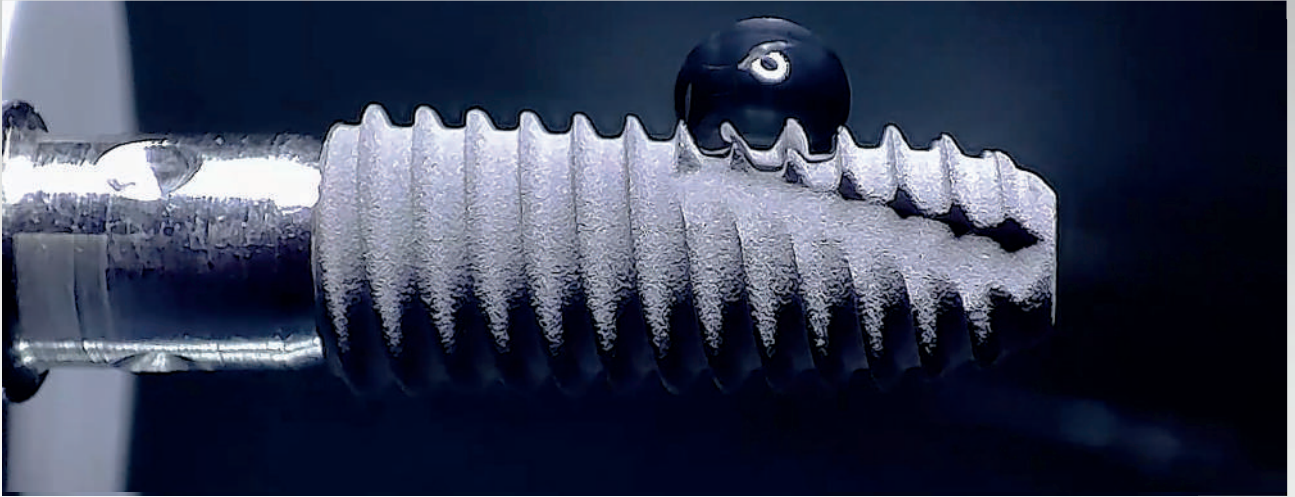




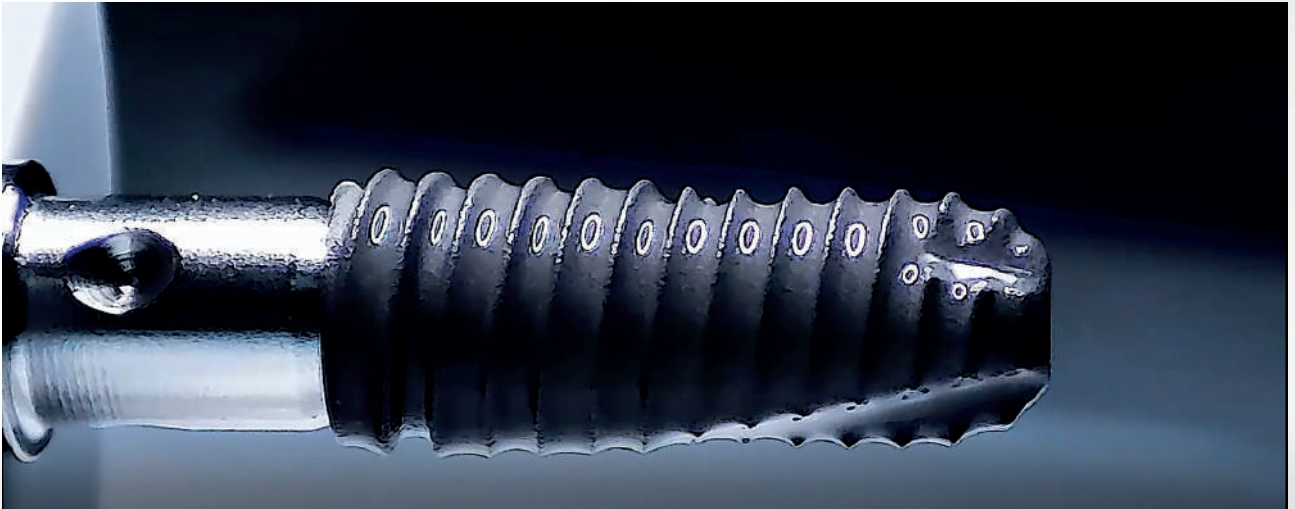
**MACROS**

Dental Implant Systems

**SO FAST**



## HYDROPHOBIC



## HYDROPHILIC

Apart from the standard **SLA surface**, hydrophilic structure is gained by plasma technology cleaning micropores much better.

**Macros Implant** presents you faster osseointegration thanks to this **SLA Active** surface.







## CLEAN ROOM STANDARDS

Macros Implant products are packaged in clean rooms that are matched with the standards of sterile field and purified from dust and particles being regularly subjected to validation process constantly and safely.



## STERILIZATION STANDARDS

Macros Implant products are subjected to sterilization verification with CE standards. In accordance with gamma ray concentration, sterilisation is completed with the standards of health care equipments sterilization.





## ➔ PACKAGING STANDARDS

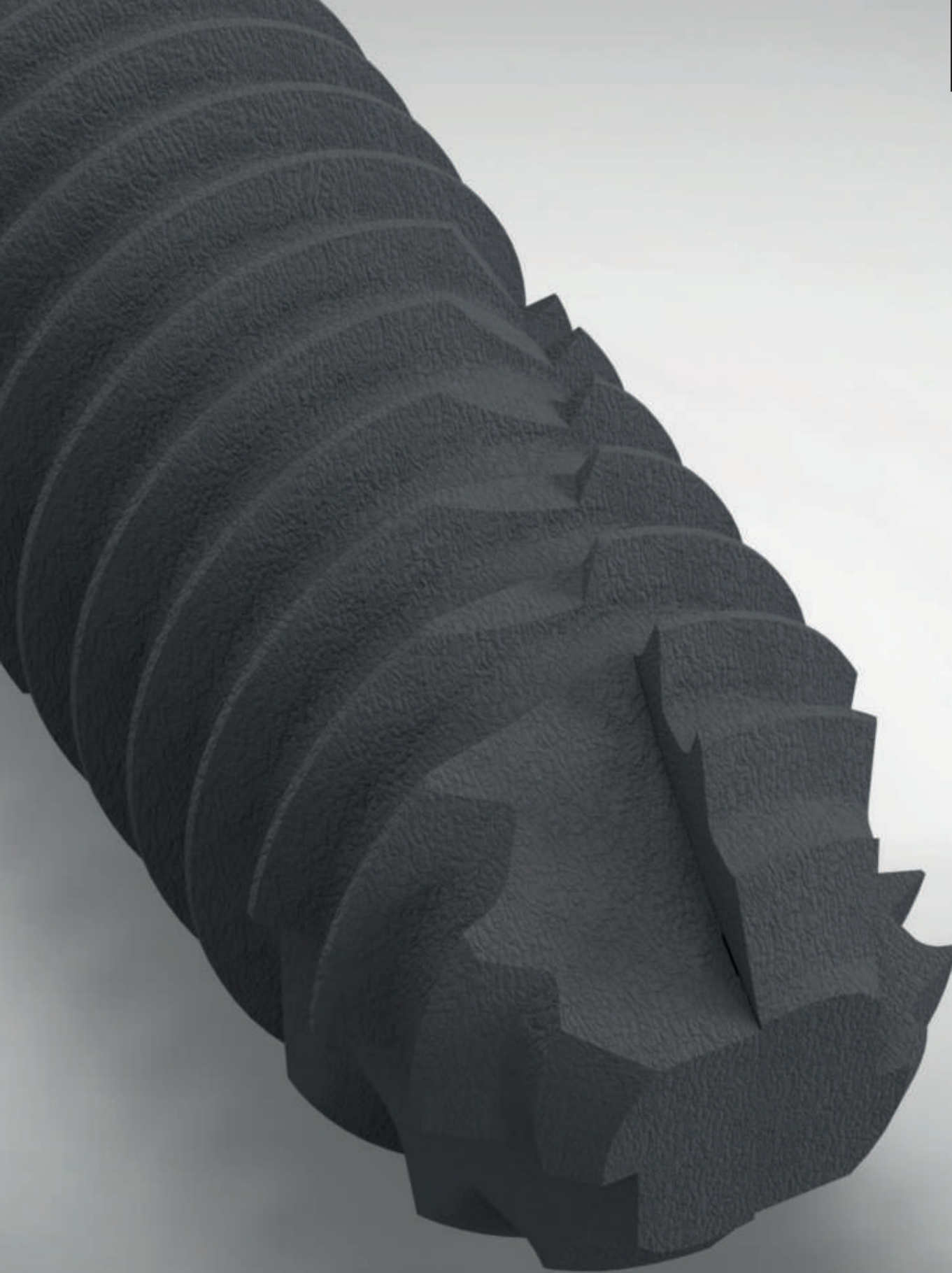


We provide our customers with packages that are ergonomically designed and user-friendly, which keeps customer satisfaction in the high level.

We design labels on which one can see length – calibre, lot number, production and expire date in accordance with the standards.

They have been coded with different lid label colors for implants of every inch.

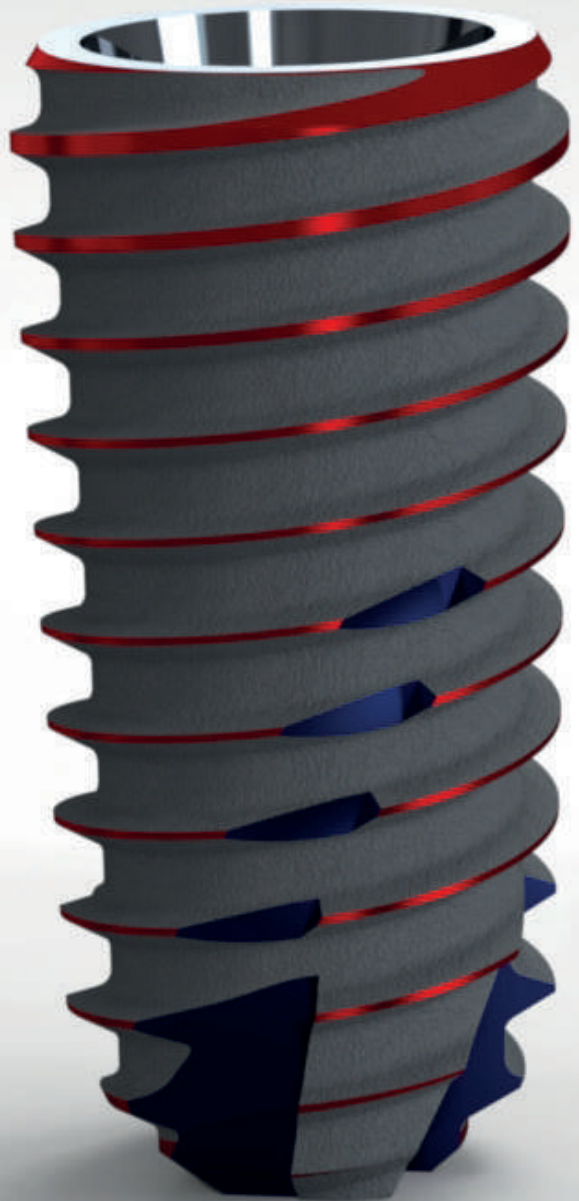






## MACRO AND MICRO SMART CUTTING EDGE

2 parallel micro smart cuts in  
Macros Implant Apex and 2  
parallel macro smart cuts  
enable optimum hold keeping  
stress in minimum level.







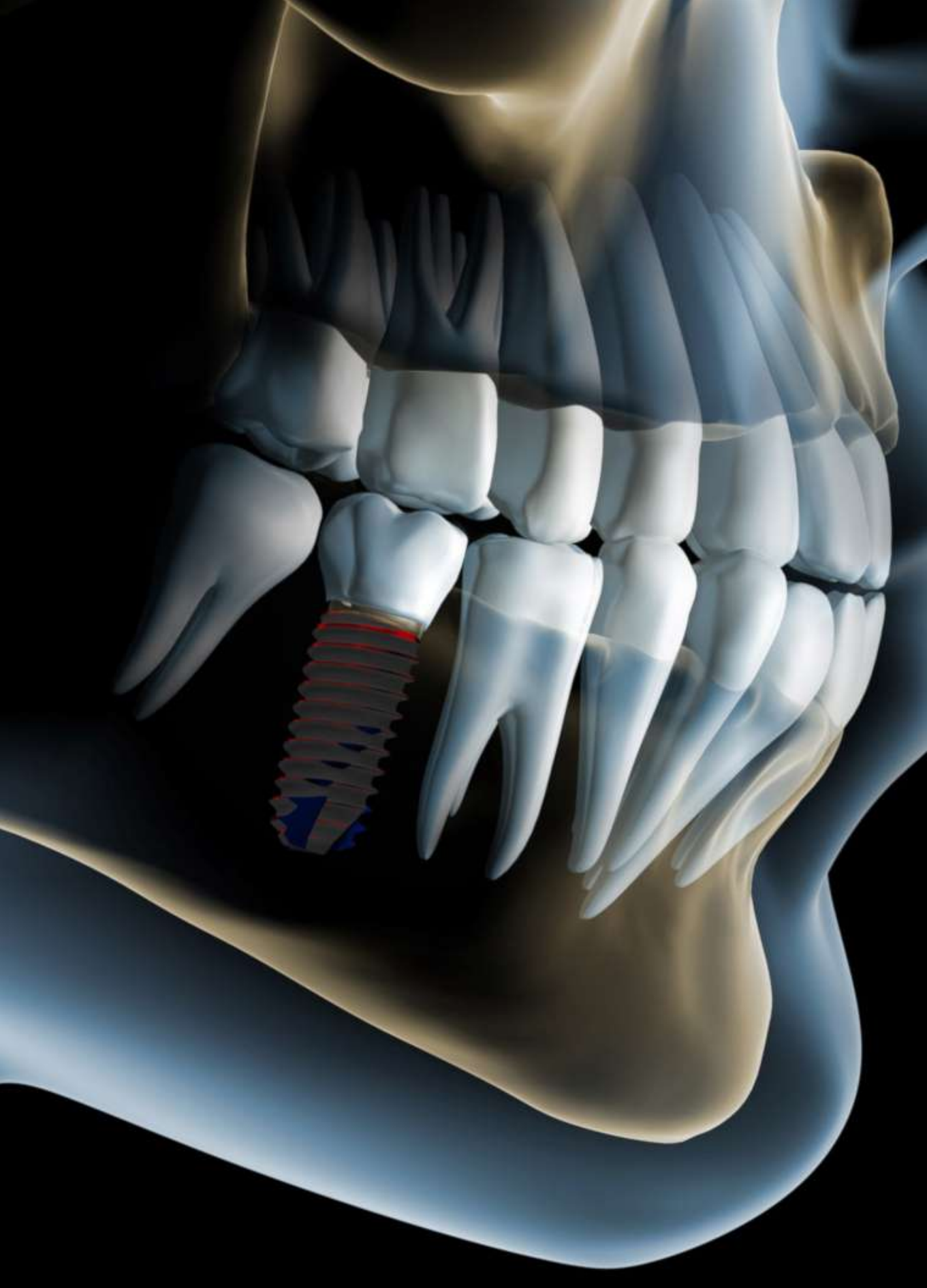
## ➔ 11° CONICAL CONNECTION

Distribution of charge between abutment and implant in all prosthetic solutions is optimized with 11° conical connection.

## ➔ PROSTHETIC PARTS

It presents every solution ranging from Simante solutions to CAD-CAM movable and screwed links.





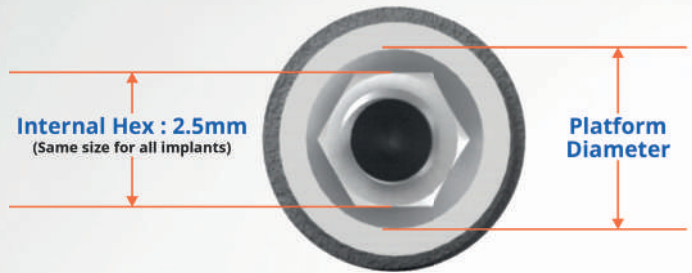
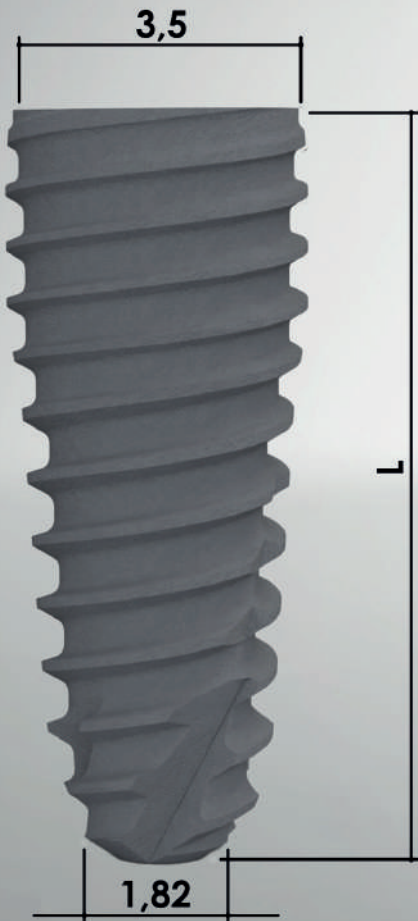
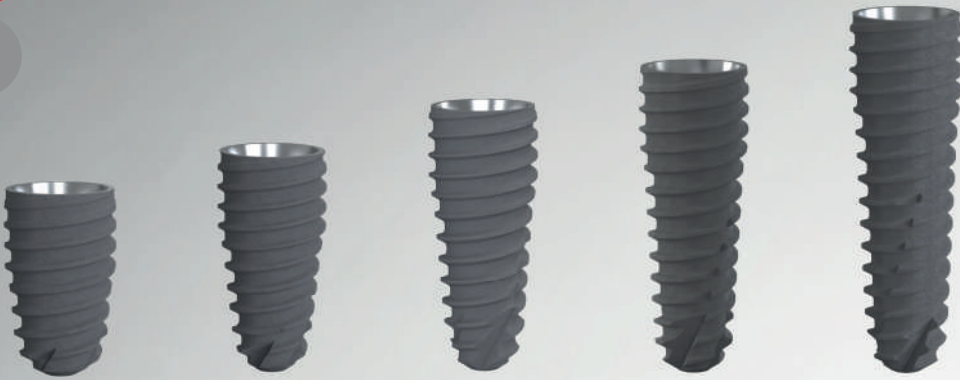
## IMPLANT DIMENSIONS





**Ø3.5** **MACROSS®**  
Implant

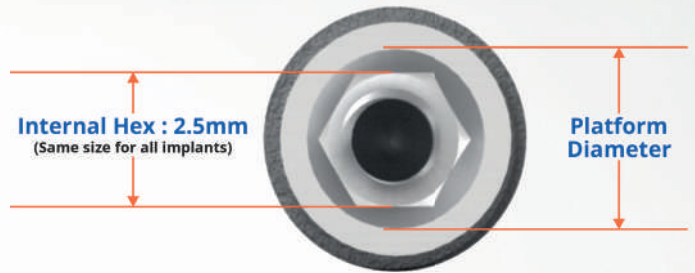
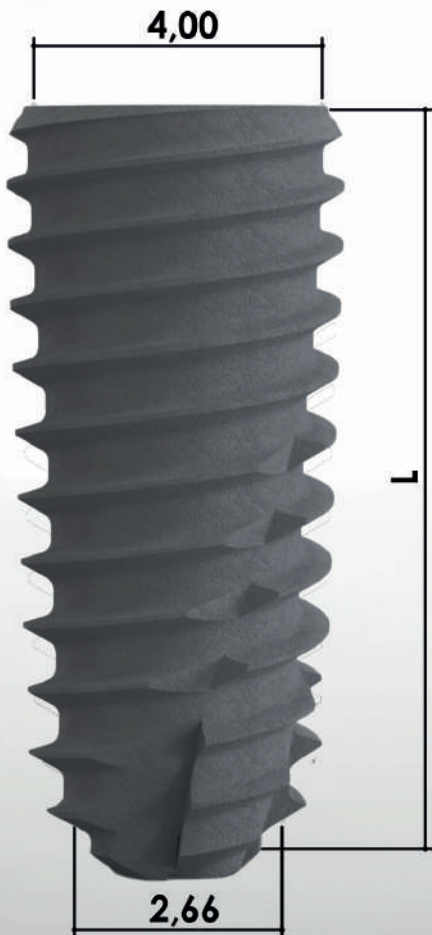
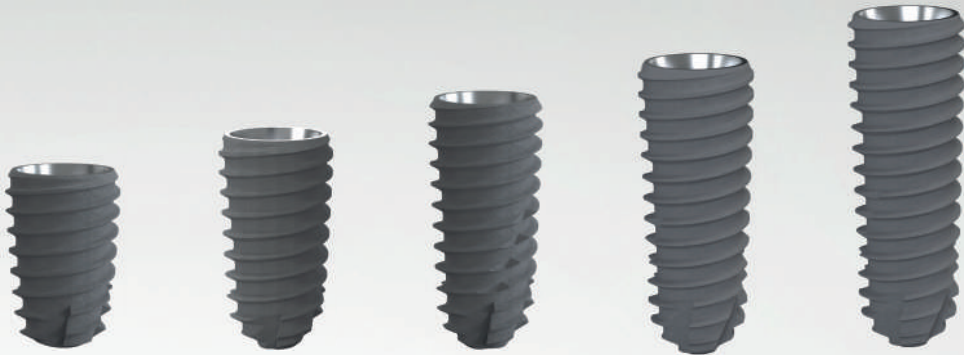
Ø4.5



Ref. Code	Implant Diameter (mm)	Length (mm)
MAC3506	Ø3.5	6
MAC3508		8
MAC3510		10
MAC3511		11
MAC3513		13

- Titanium GRADE IV
- Max 50 Torc

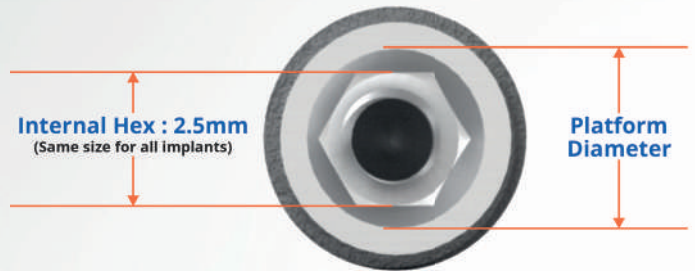
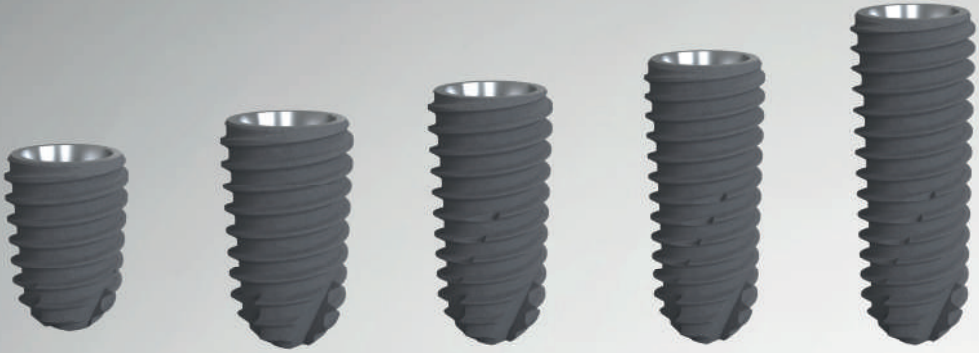
**Ø4.0** MACROSS®  
Implant



Ref. Code	Implant Diameter (mm)	Length (mm)
MAC4006	Ø4.0	6
MAC4008		8
MAC4010		10
MAC4011		11
MAC4013		13

- Titanium GRADE IV
- Max 50 Torc

**Ø4.5** **MACROSS<sup>®</sup>**  
Implant



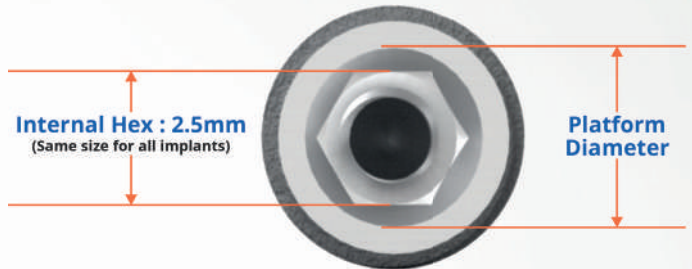
Ref. Code	Implant Diameter (mm)	Length (mm)
MAC4506	<b>Ø4.5</b>	6
MAC4508		8
MAC4510		10
MAC4511		11
MAC4513		13

- Titanium GRADE IV
- Max 50 Torc



Ø5.0

MACROSS®  
Implant



Ref. Code	Implant Diameter (mm)	Length (mm)
MAC5006	Ø5.0	6
MAC5008		8
MAC5010		10
MAC5011		11
MAC5013		13

- Titanium GRADE IV
- Max 50 Torc

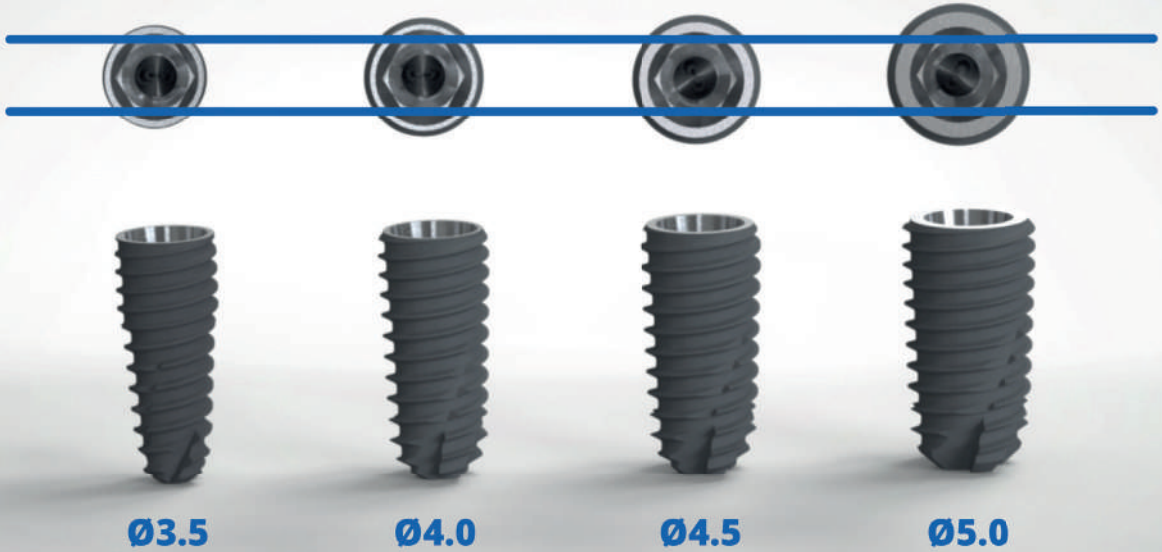
# IMPLANT PACKAGE CONTENT



## CODING

Each color represents different diameters.





**Macros Implant System** offers a **single connection** system for all implant diameter with 11° conical connection, It optimizes the load distribution between implant and abutment in all prosthetic solutions.





# PROSTHETIC PARTS





# HEALING ABUTMENTS

STANDARD Ø4.5

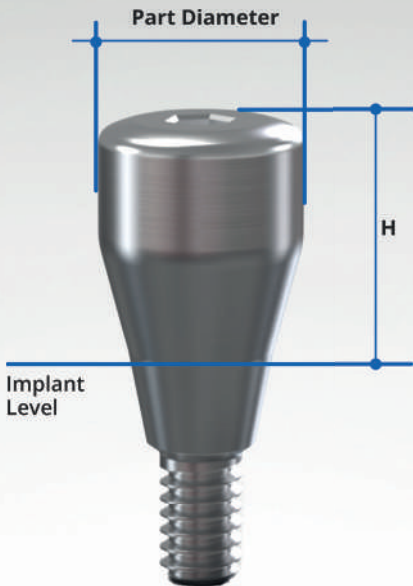


STANDARD LARGE





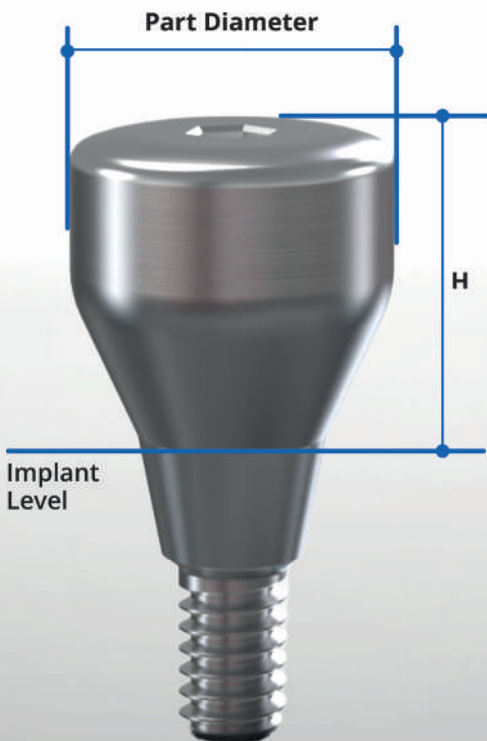
STANDARD Ø4.5



Ref. Code	Profil Diameter (mm)	Height (mm)
GF4502	Ø4.5	2
GF4503		3
GF4505		5
GF4507		7

- Titanium GRADE V
- Max 10 Torc

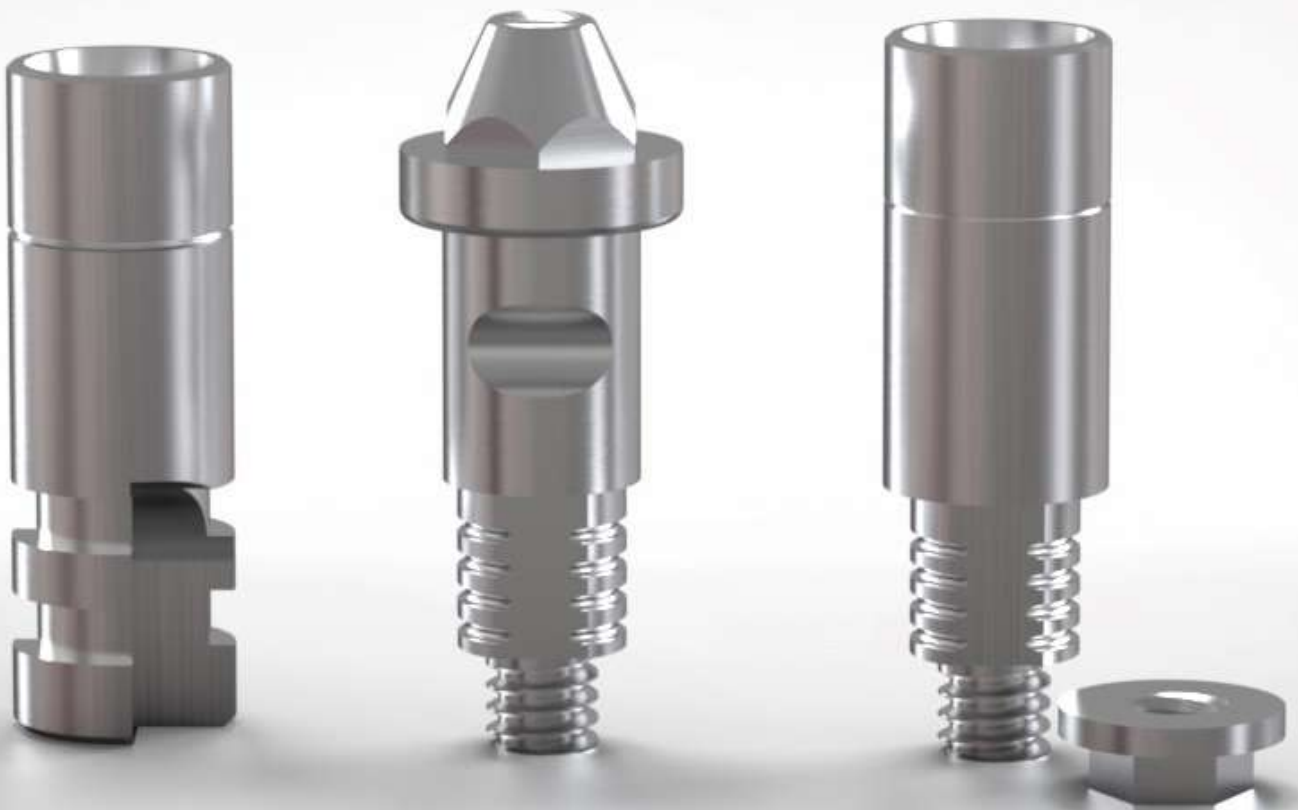
STANDARD LARGE



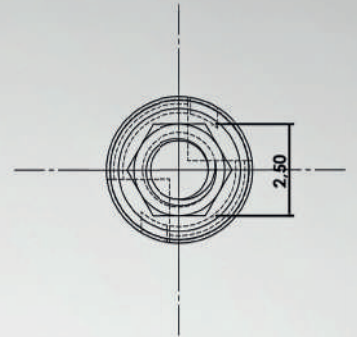
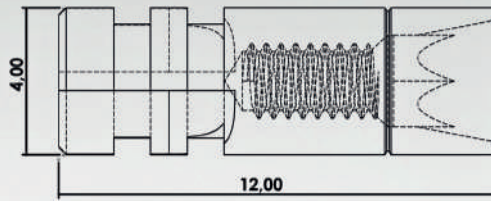
Ref. Code	Profil Diameter (mm)	Height (mm)
GF5502	Ø5.5	2
GF5503		3
GF5505		5
GF5507		7

- Titanium GRADE V
- Max 10 Torc

# ANALOGS



**STANDARD ANALOG**



Ref. Code

Type

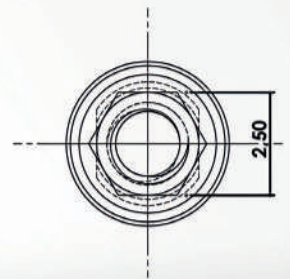
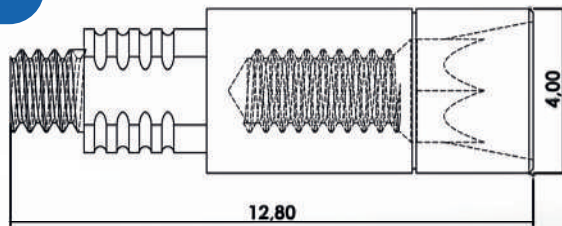
ANA4012

STANDARD

- Titanium GRADE V



**DIGITAL ANALOG**



Ref. Code

Type

DA

STANDARD

- Titanium GRADE V





# TRANSFERS



## PICK-UP IMPRESSION



Ref. Code	Type	PRODUCT NAME
ATK4515	STANDARD	PICK-UP IMPRESSION LONG
ATK4511	STANDARD	PICK-UP IMPRESSION SHORT
ATKV18	STANDARD	GUIDE PIN
ATUV18	STANDARD	GUIDE PIN LONG

- Titanium GRADE V
- Max 10 Torc

## TRANSFER IMPRESSION



Ref. Code	Type	PRODUCT NAME
KTK4515	STANDARD	TRANSFER IMPRESSION LONG
KTK4511	STANDARD	TRANSFER IMPRESSION SHORT
KTV1801	STANDARD	GUIDE PIN
KTV1802	STANDARD	GUIDE PIN LONG

- Titanium GRADE V
- Max 10 Torc

## SCREWLESS TRANSFER



Ref. Code	Type	PRODUCT NAME
VT4511	STANDARD	SCREWLESS TRANSFER

- Titanium GRADE V

# STRAIGHT ABUTMENTS







**STANDARD**

Ref. Code	Profil Diameter (mm)	Height (mm)
BA4501	Ø4.5	1
BA4502		2
BA4503		3
BA4504		4

- Titanium GRADE V
- Max 30 Torc



**STANDARD WIDE**

Ref. Code	Profil Diameter (mm)	Height (mm)
KB5501	Ø5.5	1
KB5502		2
KB5503		3
KB5504		4

- Titanium GRADE V
- Max 30 Torc

# ANGLED ABUTMENTS





Ref. Code	Profil Diameter (mm)	Height (mm)	Angle °
A154501	Ø4.5	1	15°
A154502		2	
A154503		3	
A154504		4	
A254501	Ø4.5	1	25°
A254502		2	
A254503		3	
A254504		4	

- Titanium GRADE V
- Max 30 Torc



Ref. Code	Profil Diameter (mm)	Height (mm)	Angle °
KA155501	Ø5.5	1	15°
KA155502		2	
KA155503		3	
KA155504		4	
KA255501	Ø5.5	1	25°
KA255502		2	
KA255503		3	
KA255504		4	

- Titanium GRADE V
- Max 30 Torc

# BALL ABUTMENTS





Ref. Code	Profil Diameter (mm)	Height (mm)
BALL01	Ø4.0	1
BALL02		2
BALL03		3
BALL04		4
BALL05		5
BALL07		7

- Titanium GRADE V
- Max 25 Torc



→ Three different cap options

- Pink
- Purple
- Transparent



Ref. Code	Profil Diameter (mm)	Height (mm)
LOC01	Ø4.0	1
LOC02		2
LOC03		3
LOC05		5
LOC07		7

- Titanium GRADE V
- Max 25 Torc



## MILLING ABUTMENT







## STANDARD

Ref. Code	Profil Diameter (mm)	Height (mm)
FA4509	Ø4.5	9
FA4512		12
FA4515		15

- Titanium GRADE V
- Max 30 Torc



## STANDARD ANGLED

Ref. Code	Profil Diameter (mm)	Angle °
FA015	Ø4.5	15°
FA025	Ø4.5	25°

- Titanium GRADE V
- Max 30 Torc



## STANDARD

Ref. Code	Profil Diameter (mm)	Height (mm)
iF4012	Ø4.0	12

- Titanium GRADE V
- Max 30 Torc



## WIDE

Ref. Code	Profil Diameter (mm)	Height (mm)
KF5512	Ø5.5	12

- Titanium GRADE V
- Max 30 Torc

# PLASTIC ABUTMENT

Ref. Code	Type
DANH	NON-HEX
DAH	HEX

- Max 30 Torc



# TI-CUSTOM ABUTMENT

Ref. Code	Type
TC	HEX
TCN	NON-HEX

- Titanium GRADE V
- Max 30 Torc



# MULTI UNIT ABUTMENTS







## STANDARD

Ref. Code	Profil Diameter(mm)	Height (mm)
FIX01	Ø5.0	1
FIX02		2
FIX03		3
FIX04		4
FIX05		5
FIX07		7

- Titanium GRADE V
- Max 25 Torc



## ANTI-ROTATION

Ref. Code	Profil Diameter(mm)	Height (mm)
MT01	Ø4.8	1
MT03		3

- Titanium GRADE V
- Max 30 Torc

# MULTI UNIT ANGLED ABUTMENT

Ref. Code	Profil Diameter (mm)	Height (mm)	Angle °
FIX1701	Ø5.0	1	17°
FIX1703		3	
FIX3001	Ø5.0	1	30°
FIX3003		3	

- Titanium GRADE V
- Max 30 Torc



# CASTABLE ABUTMENT

Ref. Code

Product Name

FIXUV

Multi Unit Abutment TI Screw

FIXHE

Multi Unit Temporary Abutment

FIXDN

Multi Unit Castable Abutment

- Titanium GRADE V
- Max 20 Torc





# MULTI UNIT HEALING AND IMPRESSION



Multi Unit Pick Up  
Impression Coping  
FiXATR

- Titanium GRADE V
- Max 10 Torc



Multi Unit Abutment  
Transfer Impression Coping  
Non Hex  
FiXTR

- Titanium GRADE V
- Max 10 Torc



Multi Unit Analogs  
FiXAN

- Titanium GRADE V



Multi Unit Abutment  
Healing Cap  
FiXG3

- Titanium GRADE V
- Max 10 Torc



Multi Unit Abutment Hex Driver  
FiXTK, FiXT

- Titanium GRADE V



# DIGITAL PROSTHETIC PARTS

Ref. Code	Product Name	Height (mm)
TiBASE01	Ti-BASE	1
TiBASE03	Ti-BASE	3

- Titanium GRADE V
- Max 30 Torc



Ref. Code	Product Name
SBM	Scan Body Monoblok
SBE	Multi-Unit Scanbody

- Titanium GRADE V





# SURGICAL KIT



**MACRO**  
Surg





# MACROSS

## Drilling Kit



## STANDARD SURGICAL KIT

Macros surgical kit has the same drill for all different dimensioned implants. The drills with stoppers that have the ability to cut perfectly provide ultra comfort use removing any possibilities of fault risk.

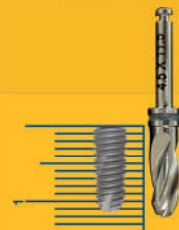


## MINI SURGICAL KIT

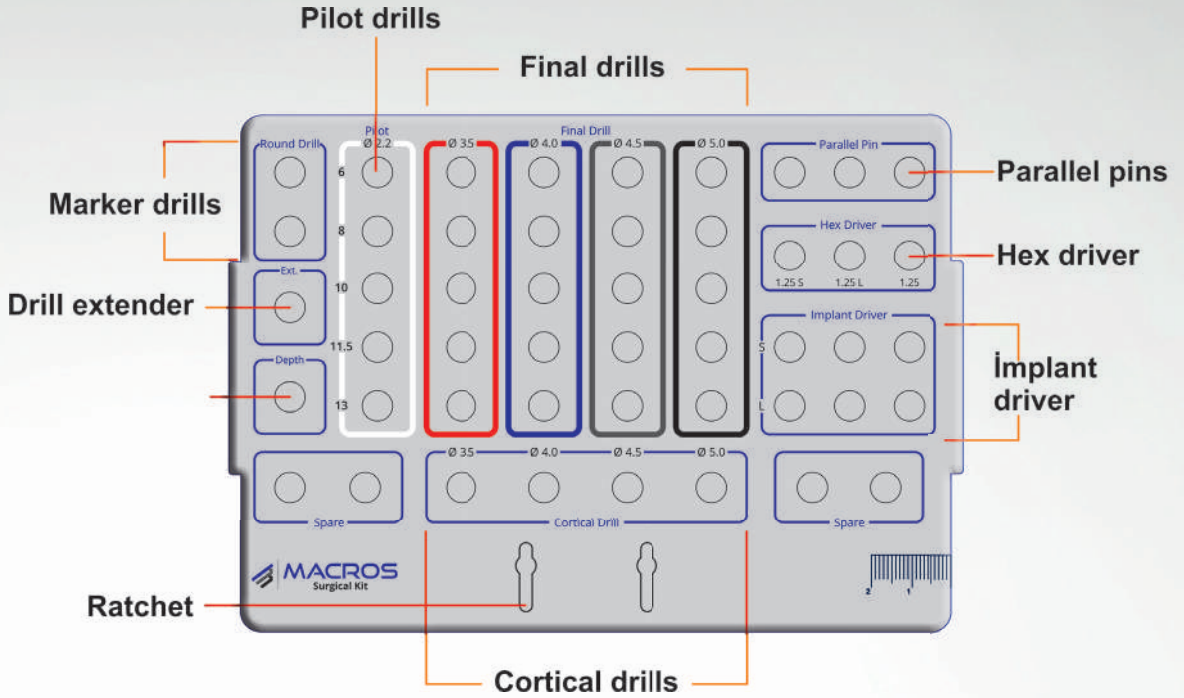


### Warning

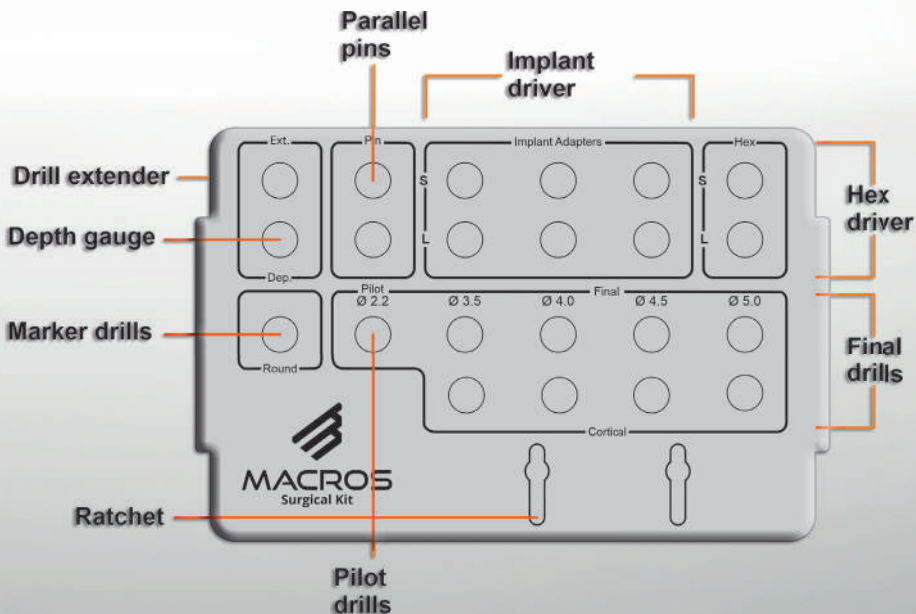
Our drill are 0.5mm longer than the implant size. Surgical planning should be implemented with this in mind.



STANDARD SURGICAL KIT LAYOUT



MINI SURGICAL KIT LAYOUT





# CERTIFICATIONS

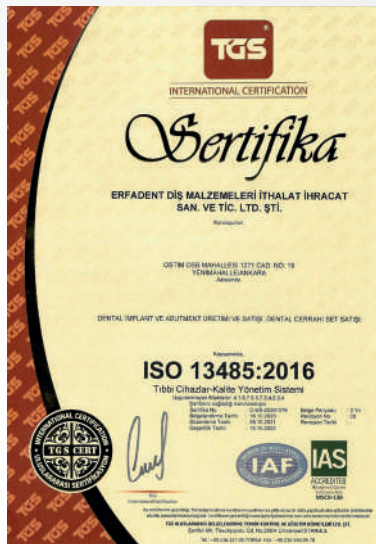
ISO



CE



Macros implant has ISO 13485: 2016 quality approval in international quality management system standards. Within the scope of this approval, it is in the norms that can be sold all over the world with the explanation of the medical product that can be implanted to the body in the risk class IIb products regulation and CE certificate numbered 93/42/AT, M.2020.106.13745 in accordance with the international CE regulation.









# MACROS

Dental Implant Systems



HIGH QUALITY  
IMPLANT SYSTEMS

[www.macroimplant.com](http://www.macroimplant.com)

[info@macroimplant.com](mailto:info@macroimplant.com)



Erfadent Dental Equipment L.L.C  
Macros Implant Turkey Manufacturer

Ostim OSB. Mah. 1271. Cad. No:19  
Yenimahalle/Ankara

[info@erfadent.com](mailto:info@erfadent.com)  
Tel: +90 312 418 93 72

[www.erfadent.com](http://www.erfadent.com)